

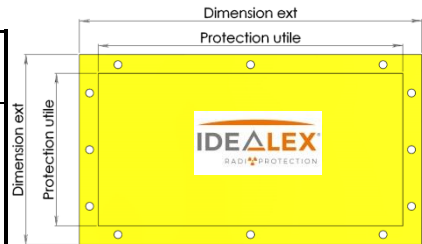
LEAD SUPPORTS AND MATTRESS



Mobile adjustable lead shield for lead blankets

Lead blankets

Part Number	Description	External Dimensions (mm)	Effective Protection (mm)	Pb Equivalent	Mattress Thickness (mm)	Weight	Fire Classification
063-1011PA	Lead Mattress for Radiation Protection	950 x 550 Large model	800 x 400	6 mm	22 mm	24 kg	M2
063-1010		810 x 510 Medium model	650 x 350			17 kg	
063-1009		580 x 580 Small model	400 x 400			10,3kg	



Mobile adjustable lead shield for lead blankets

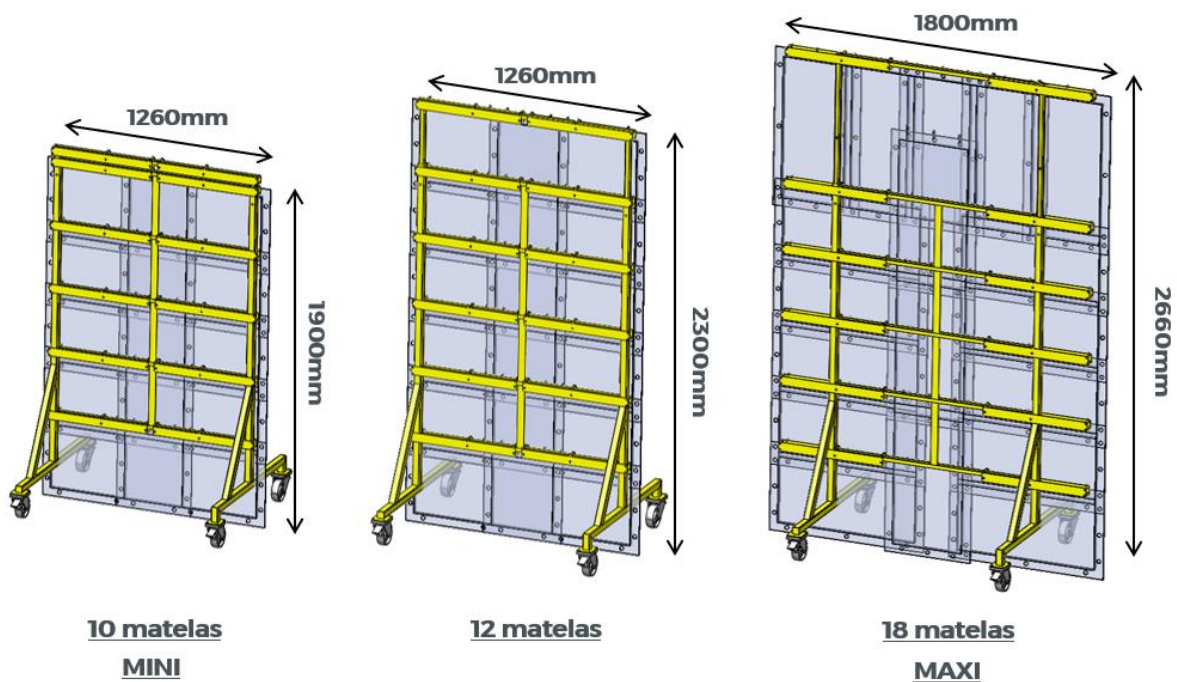
<p>Part Number 063-17006-3-5M</p> <p>Adjustable Support for 3, 4, or 5 Mattresses (800*400) Effective Protection Dimensions: 0.8m x 1.15m to 1.9m</p> <p>Effective Protection: With 3 mattresses: Width 0.8m x Height 1.15m With 4 mattresses: Width 0.8m x Height 1.50m With 5 mattresses: Width 0.8m x Height 1.90m</p> <p>Possibility to stack 2 layers of mattresses; maximum Load: 250 kg.</p> <p>Overall Dimensions: Height: 1.3m to 2m - Length: 0.9m - Depth: 0.8m - Weight (without mattresses): 39 kg</p>	
<p>Part Number 063-17006-10M</p> <p>Support for 10 Mattresses (800*400) Effective Protection Dimensions: 1.5m x 1.9m</p> <p>Possibility to stack 2 layers of mattresses; maximum Load: 500 kg</p> <p>Overall Dimensions: Height: 2m - Length: 0.9m - Depth: 0.8m - Weight (without mattresses): 45 kg</p>	
<p>Part Number 063-17006-15M</p> <p>Support for 15 Mattresses (800*400) Effective Protection Dimensions: 2.25m x 1.9m</p> <p>Possibility to stack 2 layers of mattresses; maximum Load: 750 kg</p> <p>Overall Dimensions: Height: 2.45m - Length: 0.9m - Depth: 0.8m - Weight (without mattresses): 55 kg</p>	



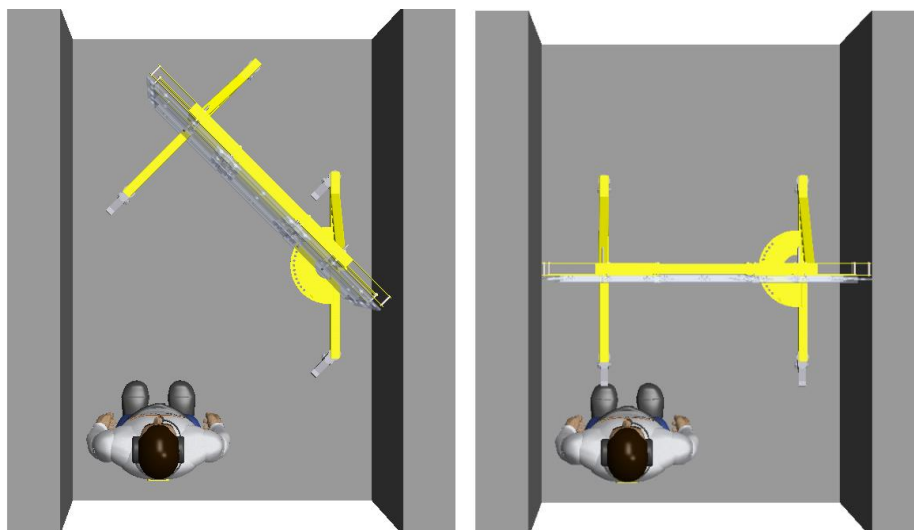
Extendable lead blanket support

Extendable painted steel mattress support, allowing coverage of an effective protection area ranging from 1260 mm to 1800 mm in width and 1900 mm, 2300 mm, or 2660 mm in height.

Part Number : 063-21097-510



Optional swivel leg available upon request.
A swivel leg can be added to create a passageway.



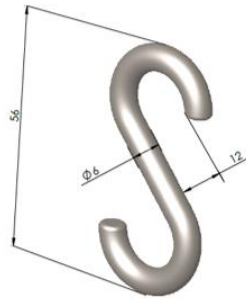


Lead blankets storage and accessories

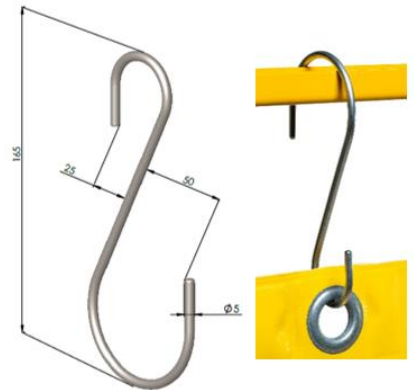


Part Number : 063-1212

Crochets de suspension / hanging hook :



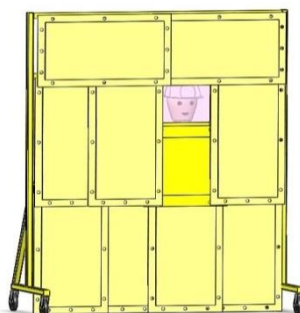
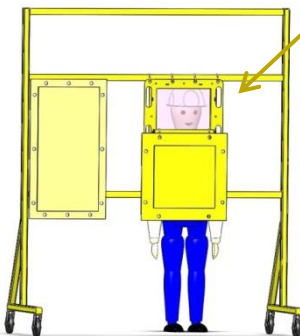
Code article : 063-2013
Matière : Acier zingué



Code article : 063-2015
Matière : Acier Galva

Lead glass with standard blankets GLASMAT

Viewing is done through a screen equipped with lead mattresses. The leaded window is designed to be suspended in place of a mattress.



Specifications

Dimensions:

Overall: W x H = 520 mm x 460 mm

Viewing area: 150 x 150 mm

Radiological protection: 3 models available

GLASMAT equivalent to 6 mm Pb: 21 kg

GLASMAT equivalent to 12 mm Pb: 32 kg

GLASMAT equivalent to 18 mm Pb: 44 kg

Mounting:

Suspended using S-hooks (same as for mattresses)

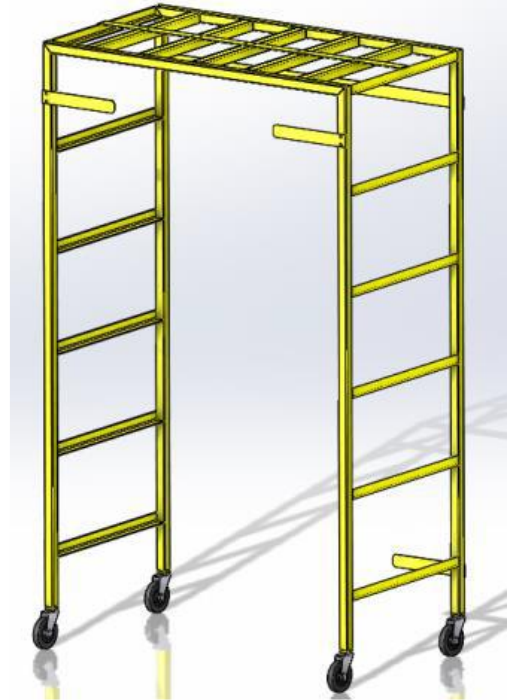
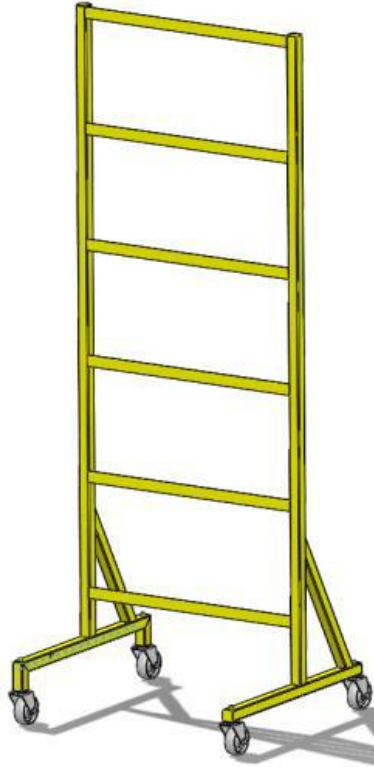
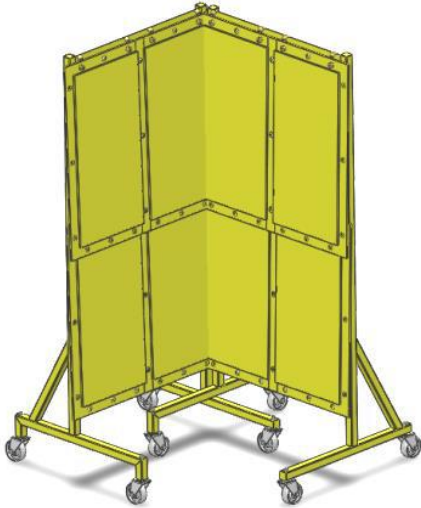
Other mounting options available upon request

LEAD SUPPORTS AND MATTRESS



Some examples

Page | 4



Custom-made mattresses and supports available upon request – please contact us.